



KwaZulu-Natal HIV/AIDS, STIs & TB Multi-Sectoral Response Synthesis Report Quarter 1 FY 2017/2018

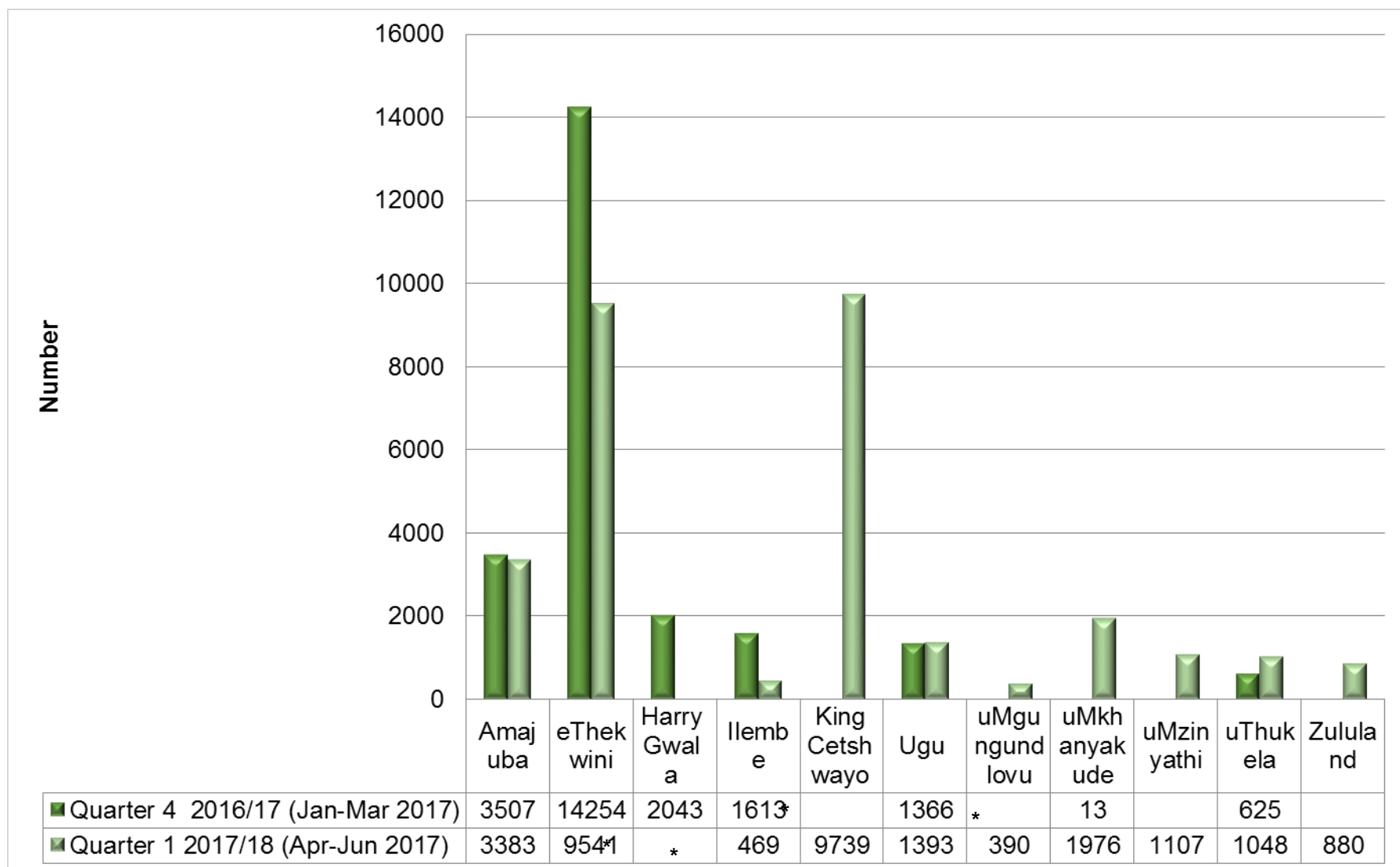
Provincial Council on AIDS (PCA) Meeting
Venue: Grey's Hospital
Date: 13 September 2017
Presenter: Dr NI Ndlovu



Introduction

- This presentation provides a summary of the multi-sectoral HIV/AIDS, STI and TB response in KwaZulu-Natal Province for the reporting quarter; Quarter 1 FY 2017/18
- District HIV related data submitted by the 11 District AIDS Councils in the province was consolidated and analysed
- Tables and graphs were used to depict performance by quarter:
 - Reach/coverage is calculated using estimated population figures where applicable.
 - Performance is depicted in a dashboard form using the colour red to denote poor performance/decline from the previous quarter, colour green to depict good performance/improvement from previous quarter and yellow colour to depict no change
- Quarter 4 FY 2016/17 (Jan-Mar 2017) is used as the baseline for comparison with Quarter 1 FY 2017/18.

Graph 1: Orphans & Vulnerable Children Registered in Quarter 1 FY 2017/18



* Data Quality: Gaps in data

Table 1: Total OVCs Registered in Quarter 1 FY 2017/18

		Total Number & % of OVCs Registered			
District	Estimated # of OVC	From 2012 to Q4 2016/17	From 2012 to Q1 2016/2017	From 2012 to Q4 FY 2016/17 (%)	From 2012 to Q1 2017/18 (%)
Amajuba	47186	53951	57334	114%	122%
eThekwini	322597	121858	131399	38%	41%
Harry Gwala	56815	62867	62867	111%	111%
Ilembe	43335	26999	27468	62%	63%
King Cetshwayo	84742	36925	46664	44%	55%
Ugu	67409	30665	32058	45%	48%
uMgungundlovu	95335	79089	79479	83%	83%
uMkhanyakude	58741	12770	14746	22%	25%
uMzinyathi	48149	22280	23387	46%	49%
uThukela	62594	24077	25125	38%	40%
Zululand	74854	23497	24377	31%	33%
Province	961757	494978	524904	51%	55%

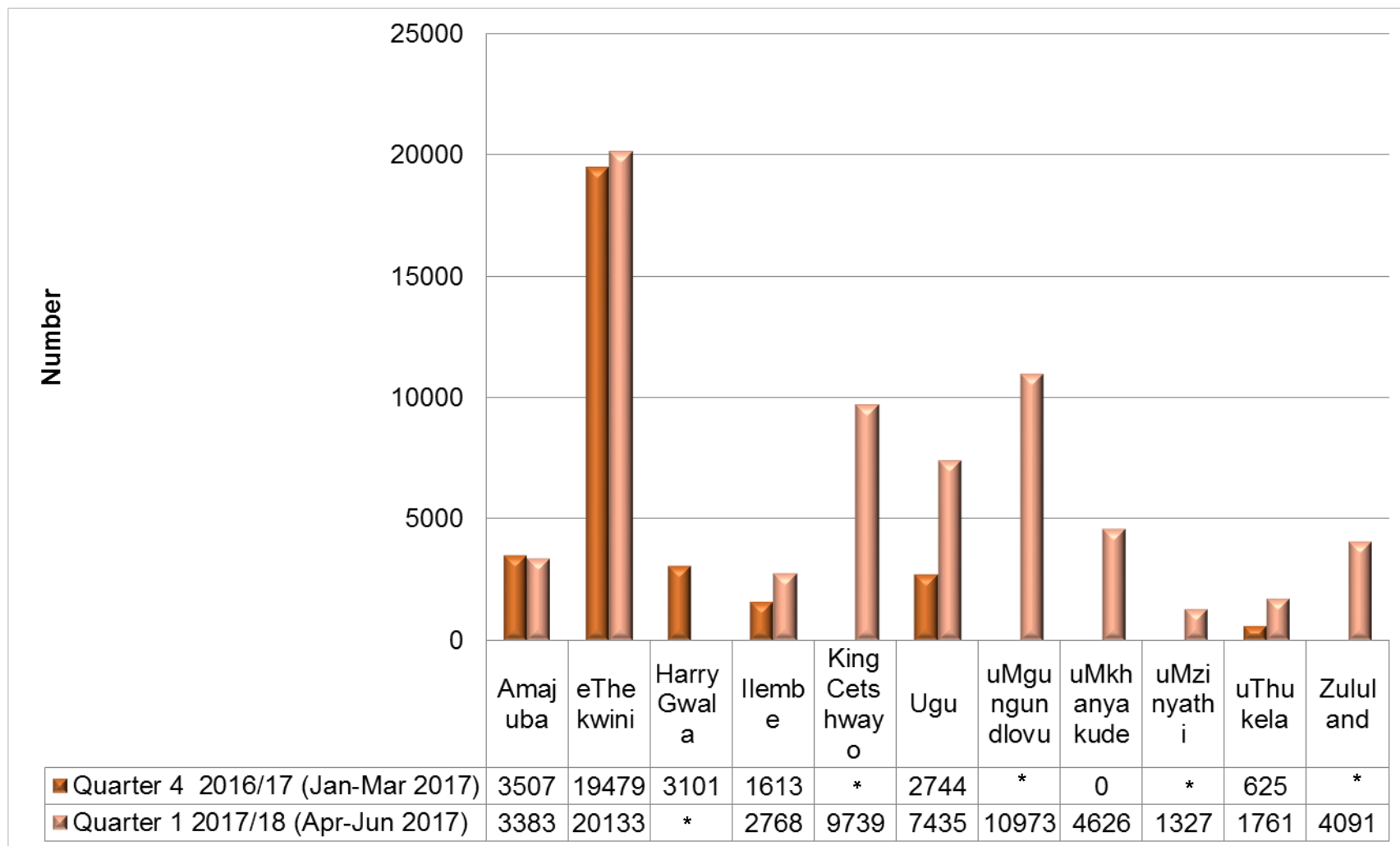
Dashboard & Summary: OVC Registration

- The overall number of registered OVCs in the province increased by 6 505 in Q1 FY2017/18 bringing the total number of registered OVCs in the quarter to 29 926
- Three districts (Ugu, uMkhanyakude and uThukela) reported an increase in the number of OVCs registered in the quarter compared to Q4 FY 2016/17. uThukela district recorded the largest increase (i.e. 423) in registered OVCs in Q1 FY 2017/18.

Total number of registered Orphans & Vulnerable Children (OVC)

- A total of 55% of OVCs have been registered in the province as of 2012 to Q1 FY 2017/18. The number of OVCs registered increased from 51% in Q4 FY 2016/17 to 55% in Q1 FY 2017/18
- Amajuba and Harry Gwala Districts recorded the highest percentage of registered OVCs in the province followed by uMgungundlovu District.
- Six Districts (uThukela - 49%, eThekweni - 41%, Ugu - 48% and uMzinyathi - 49%; in uMkhanyakude - 25% and Zululand - 33%) reported that less than 50% of OVCs in their respective Districts were registered. Only 25% of the total OVCs in uMkhanyakude District were registered while in Zululand District 33% of total OVCs were registered.

Graph 2: OVCs Receiving Care & Support in Quarter 1 FY 2017/18



* Data Quality: Gaps in data

Table 2: Total OVCs Receiving Care and Support in Quarter 1 FY 2017/18

		Total Number & % of OVCs Receiving Care and Support			
District	Estimated # of OVC	From 2012 to Q4 2016/17	From 2012 to Q1 2016/2017	From 2012 to Q4 FY 2016/17 (%)	From 2012 to Q1 2017/18 (%)
Amajuba	47186	53951	57334	114%	122%
eThekwini	322597	125266	145399	39%	45%
Harry Gwala	56815	63590	63590	112%	112%
Ilembe	43335	26999	29767	62%	69%
King Cetshwayo	84742	45386	55125	54%	65%
Ugu	67409	32043	39478	48%	59%
uMgungundlovu	95335	112332	123305	118%	129%
uMkhanyakude	58741	12692	17318	22%	29%
uMzinyathi	48149	20690	22017	43%	46%
uThukela	62594	24398	26159	39%	42%
Zululand	74854	25392	29483	34%	39%
Province	961757	542739	608975	56%	63%

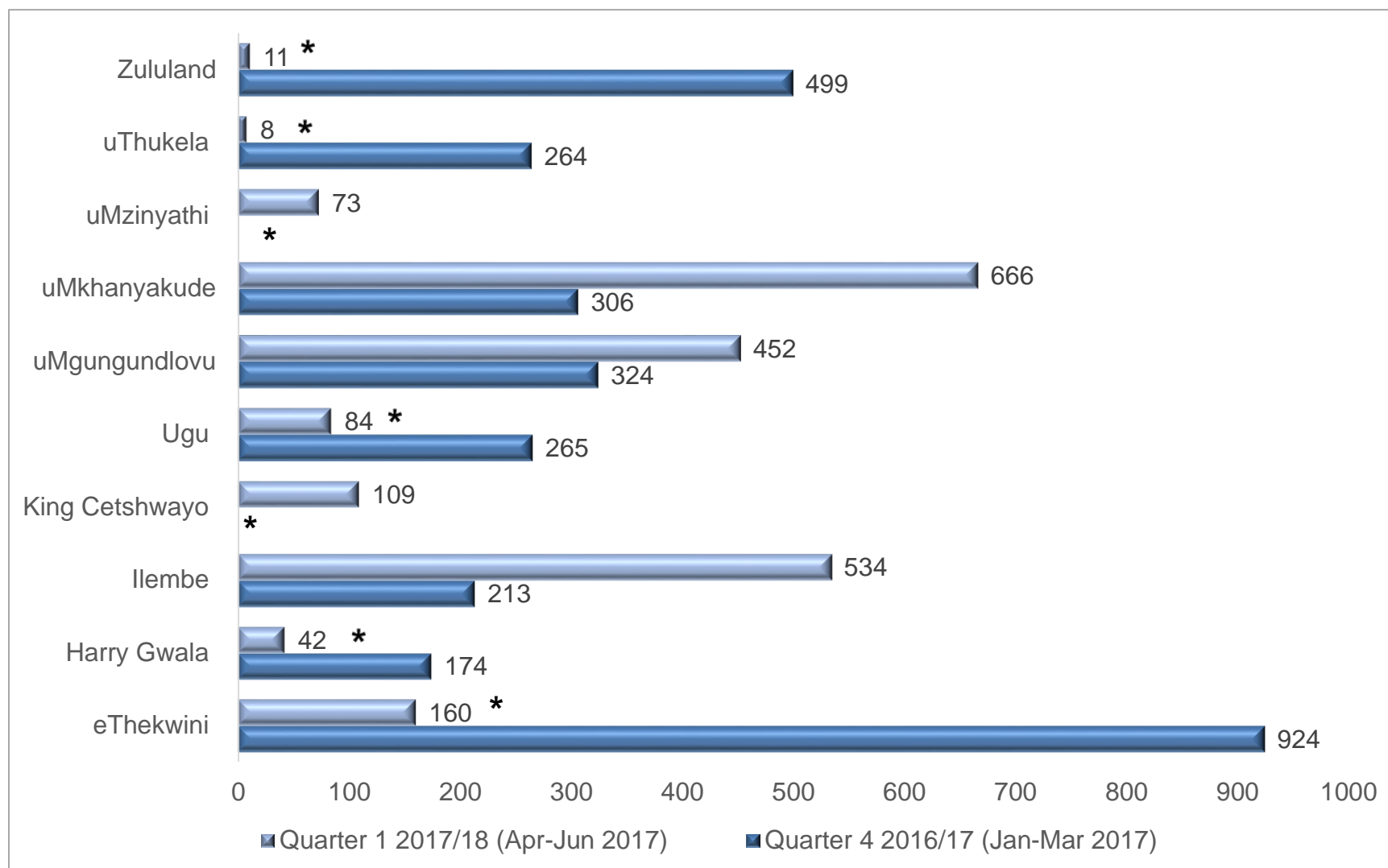
Dashboard & Summary: OVCs Receiving Care & Support

- 66 236 OVCs in the province received care and support in the quarter, an increase by 35 167 from Q4 FY 2016/17
- eThekwini and uMgungundlovu Districts reported the highest numbers of OVCs receiving care and support in Q1 FY 2017/18
- Ugu District reported the highest increase in OVCs receiving care and support in the quarter.

Total number of OVCs receiving care and support

- A total of 63% of OVCs received care and support in the quarter having increased from 56% in Q4 FY 2016/17
 - uMgungundlovu, Amajuba and Harry Gwala Districts were noted to have an impressive percentage of total OVCs receiving care and support during the quarter.
-
- uMkhanyakude District recorded the lowest number (29%) of OVCs receiving care and support in the province followed by Zululand District (39%)
 - Three other Districts (uMzinyathi - 46%, eThekwini - 45%, uThukela - 42%) reported that less than 50% of OVCs in their respective Districts received care and support.

Graph 3: Deliveries under 18 years in Quarter 1 FY 2017/18



* Data Quality: Gaps in data

Dashboard & Summary: Deliveries under 18 years

- | | |
|--|--|
| <ul style="list-style-type: none">Overall, 2 139 deliveries under 18 years were reported in the province in Q1 FY 2017/18 as compared to 3 000 in Q4 FY 2016/17. | |
| <ul style="list-style-type: none">Data quality issues related to this indicator were observed in most of the submitted DAC quarterly reports. | |

Table 3: Learner Pregnancies in Quarter 1 FY 2017/18

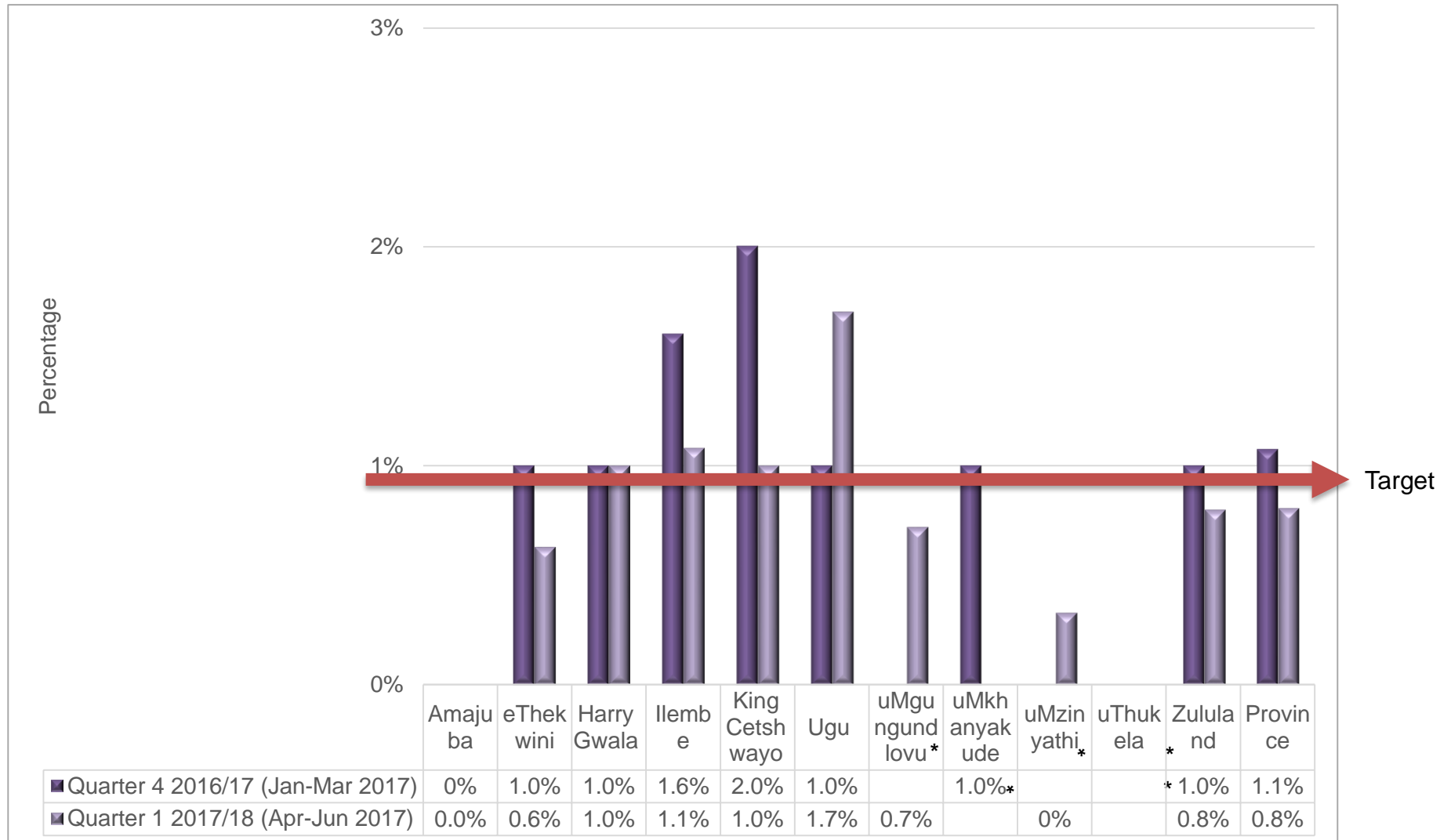
District	Quarter 4 2016/17 (Jan-Mar 2017)	Quarter 1 2017/18 (Apr-Jun 2017)	Difference
Amajuba	*	0	
eThekwini	*	0	
Harry Gwala	139	90	-49
Ilembe	228	45	-183
King Cetshwayo	*	*	
Ugu	*	224	
uMgungundlovu	*	39	
uMkhanyakude	106	*	
uMzinyathi		*	
uThukela	34	37	3
Zululand	*	*	
Province	507	435	-72

* Data Quality: Gaps in data

Dashboard & Summary: Learner Pregnancies

- The overall number of learner pregnancies for the quarter was 435, this decreased from Q4 FY 2016/17 where the reported number of learner pregnancies was 507
- Data quality issues observed in learner pregnancy data.

Graph 4: PCR Positivity under 10 weeks



* Data Quality: Gaps in data

Dashboard & Summary: PCR Positivity

- The overall PCR positivity at around 10 weeks for the province was 0.8; the target of <1% was achieved
 - Amajuba and uMzinyathi Districts reported 0% positivity at around 10 weeks for the quarter
 - eThekweni (0.8%), uMgungundlovu (0.7%) and Zululand (0.8%) Districts achieved the less than 1% target.
-
- Positivity at around 10 weeks was highest (1.7%) in Ugu District and showed a 0.7% increase from Q4 FY 2016/17.

Table 4: HIV Tests Conducted in Quarter 1 FY 2017/18

District	Target	Quarter 1 2017/18 (Apr-Jun 2017)	% Achieved	Deviation
Amajuba	32251	33880	105%	
eThekwini	228558	296361	130%	
Harry Gwala	28837	36057	125%	
Ilembe	41082	39063	95%	2019
King Cetshwayo	56920	75858	133%	
Ugu	45116	53817	119%	
uMgungundlovu	69054	62925	91%	6129
uMkhanyakude	38282	41116	107%	
uMzinyathi	31381	50881	162%	
uThukela	42352	33461	79%	8891
Zululand	50986	59168	116%	
Province	664817	782587	118%	

Dashboard & Summary: HIV Tests Conducted

- The Province exceeded the target for HIV tests conducted in the quarter; a total of 782 587 HIV tests were conducted, a significant increase from Q4 FY 2016/17. Similarly, 8 Districts (uMzinyathi, King Cetshwayo, eThekwini, Ugu, Harry Gwala, Zululand, uMkanyakude and Amajuba) exceeded their target for HIV tests conducted in the quarter
 - The best performing Districts in relation to HIV tests conducted in the quarter were; uMzinyathi, King Cetshwayo and eThekwini Districts
 - Despite not having achieved their respective targets for the quarter, Ilembe and uMgungundlovu Districts provided HIV testing to over 90% of their targeted population.
-
- uThukela District had the lowest percentage (79%) of HIV tests conducted in Q1 FY 2017/18; with a deviation of approximately 8 000 from the targeted HIV tests in the quarter.

Table 5: HIV Tests Conducted Trends - Quarter 1 2016/17 up to Quarter 1 2017/18

District	Quarter 1 2016/17	Quarter 2 2016/17	Quarter 3 2016/17	Quarter 4 2016/17	Quarter 1 2017/18
Amajuba	31060	34282	35428	30471	33880
eThekwini	234701	225554	266525	276328	296361
Harry Gwala	10895	46708	36621	37858	36057
Ilembe	39845	49594	45561	47948	39063
King Cetshwayo	57207	79686	84578	82279	75858
Ugu	61228	90716	106178	64357	53817
uMgungundlovu	56295	75759	60614	71734	62925
uMkhanyakude	19942	36335	37718	43130	41116
uMzinyathi	56102	29740	56819	*	50881
uThukela	23316	24458	31887	31765	33461
Zululand	48067	52072	48640	47525	59168
Province	638658	744904	810569	733395	782587

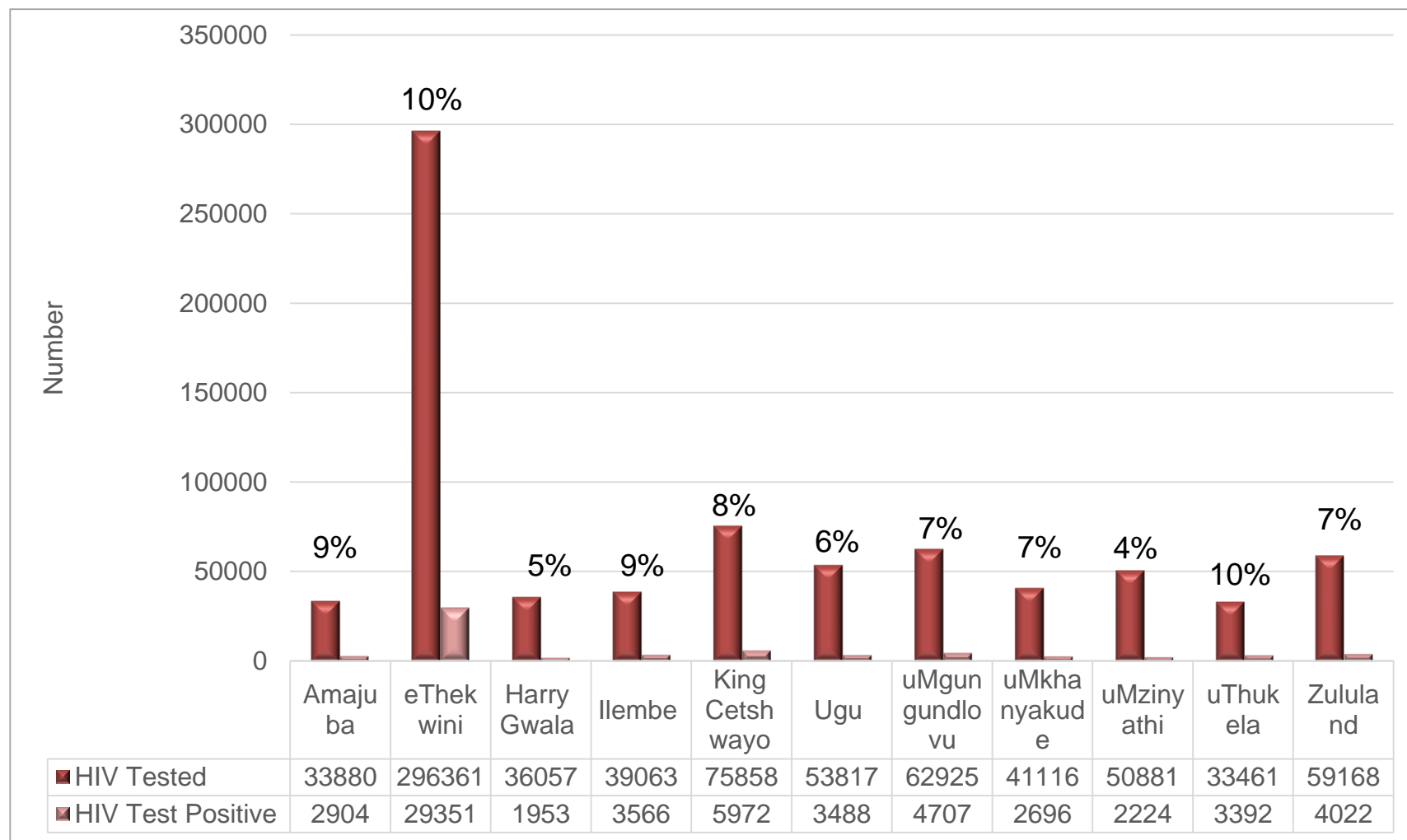
* Data Quality: Gaps in data

Dashboard & Summary: HIV Tests Trends

HIV Tests Conducted Trends Quarter 1 2017/18

- Overall, HIV tests conducted in the province showed a steady increase over the quarters except for a decrease in Q4 FY 2016/17 before recording an increase in Q1 FY 2017/18
 - Two Districts (Amajuba and uThukela) demonstrated a similar pattern to the one observed in the Province.
-
- Six Districts (Ugu, iLembe, uMgungundlovu, King Cetshwayo, uMkhanyakude and Harry Gwala) show a decrease in HIV tests conducted during the quarter
 - King Cetshwayo, Ugu and uMkhanyakude Districts showed a decreasing trend in HIV tests conducted as of Q4 FY 2016/17 to Q1 FY 2017/18.

Graph 5: HIV Positivity in Q1 FY 2017/18



Dashboard & Summary: HIV Test Positivity

- Out of the total HIV tests conducted in the province, 8% were found to be positive during Q1 FY 2017/18
- eThekwini and uThukela Districts had the highest HIV positivity in the quarter at 10%
- uMzinyathi District reported the lowest HIV positivity (i.e., 4%).

Table 6: Males aged 15-49 undergoing Medical Male Circumcision in Q1 FY 2017/18

District	Target	Quarter 1 2017/18 (Apr-Jun 2017)	% Achieved	Deviation
Amajuba	2220	451	20%	1769
eThekwini	16792	6461	38%	10331
Harry Gwala	1994	1234	62%	760
Ilembe	2885	820	28%	2065
King Cetshwayo	3974	2892	73%	1082
Ugu	3154	860	27%	2294
uMgungundlovu	4518	2728	60%	1790
uMkhanyakude	2881	2403	83%	478
uMzinyathi	2135	821	38%	1314
uThukela	2893	1686	58%	1207
Zululand	3461	1277	37%	2184
Province	46907	21633	46%	25274

Dashboard & Summary: Medical Male Circumcision

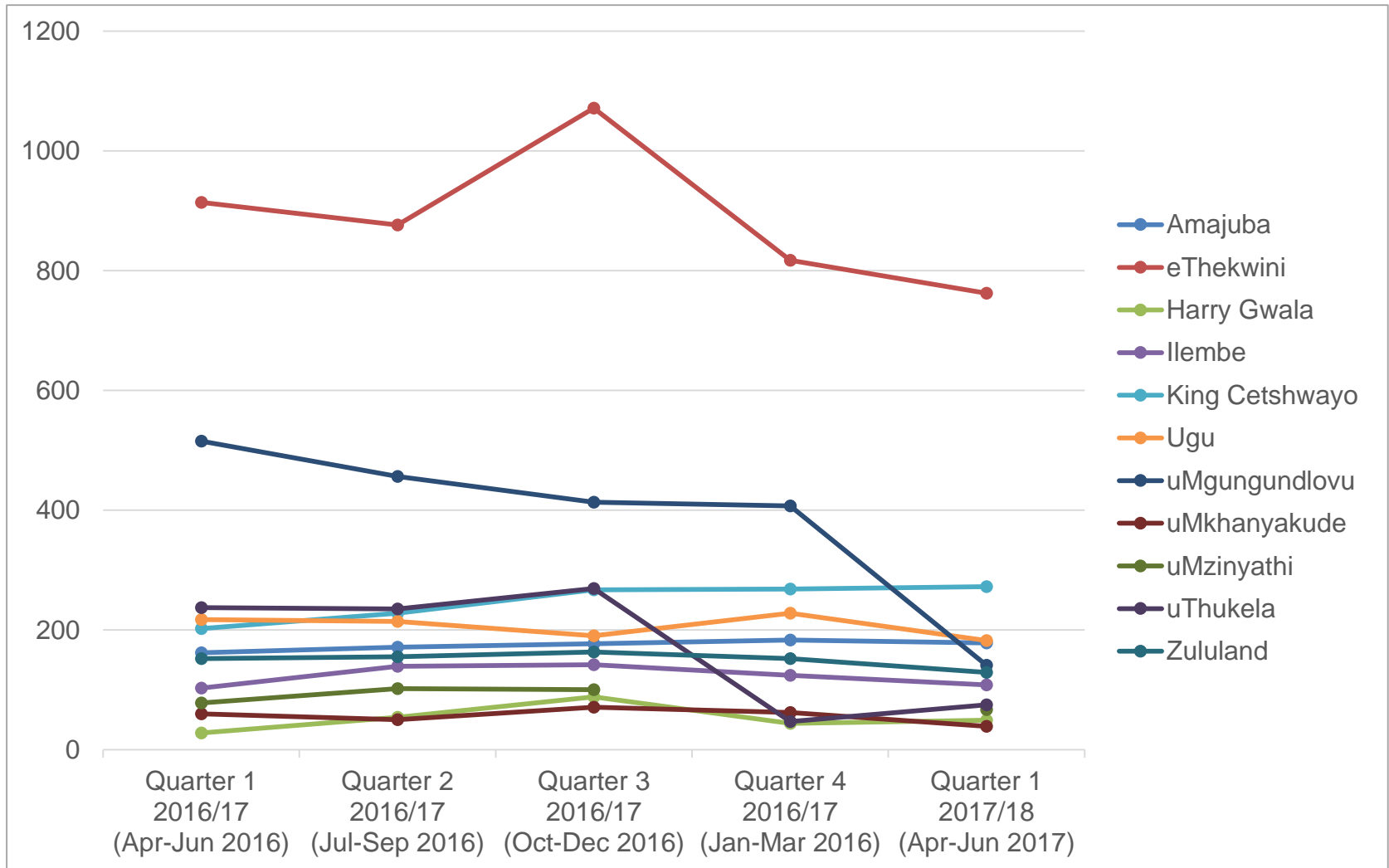
- | | |
|---|--------|
| ▪ A total of 21 633 males aged 15-49 years underwent Medical Male Circumcision (MMC) in Q1 FY 2017/18; this was significantly below the targeted number | Red |
| ▪ uMkhanyakude District had the highest achievement at 83%, followed by King Cetshwayo District at 73% | Yellow |
| ▪ The lowest performing Districts were Amajuba (20%), Ugu (27%) Ilembe (28%) Zululand (37%), uMzinyathi (38%) and eThekwini (38%). | Red |

Table 7: Males aged 15-49 undergoing MMC trends Quarter 1 2016/17 up to Quarter 1 2017/18

District	Quarter 1 2016/17	Quarter 2 2016/17	Quarter 3 2016/17	Quarter 4 2016/17	Quarter 1 2017/18
Amajuba	813	811	457	379	451
eThekwini	3483	5082	3695	3473	6461
Harry Gwala	918	974	1001	835	1234
Ilembe	773	996	457	457	820
King Cetshwayo	1912	971	5494	1372	2892
Ugu	765	2387	559	1027	860
uMgungundlovu	2252	1810	2171	3235	2728
uMkhanyakude	904	1510	875	1258	2403
uMzinyathi	1966	3833	686	*	821
uThukela	3758	2052	710	1459	1686
Zululand	1370	2302	1003	645	1277
Province	18914	22728	17108	14140	21633

* Data Quality: Gaps in data

Graph 6: New Sexual Assault Cases



* Data Quality: Gaps in data

Dashboard & Summary: New Sexual Assault Cases

- A total of 2 002 sexual assault cases were reported in Q1 FY 2017/18. There was an increasing trend in new sexual assault cases between Q2 and Q3 FY 2016/17 and then a decreasing trend in Q4 FY 2016/17 to Q1 FY 2017/18.
 - eThekwini and King Cetshwayo Districts had the largest percentage share, 38% and 14% respectively in sexual assault cases in the quarter
 - Eight Districts (i.e., Amajuba, eThekwini, Ilembe, Ugu, uMgungundlovu, uMkhanyakude, uMzinyathi, uThukela and Zululand districts) showed a decreasing trend in sexual assault cases in Q1 FY 2017/18.
-
- uMgungundlovu District reported the largest decrease in sexual assault cases between Q4 FY 2016/17 and Q1 FY 2017/18. The District was also observed to be the only District that has shown a consistent decrease in sexual assault cases over the quarters as of Q2 FY 2016/17.

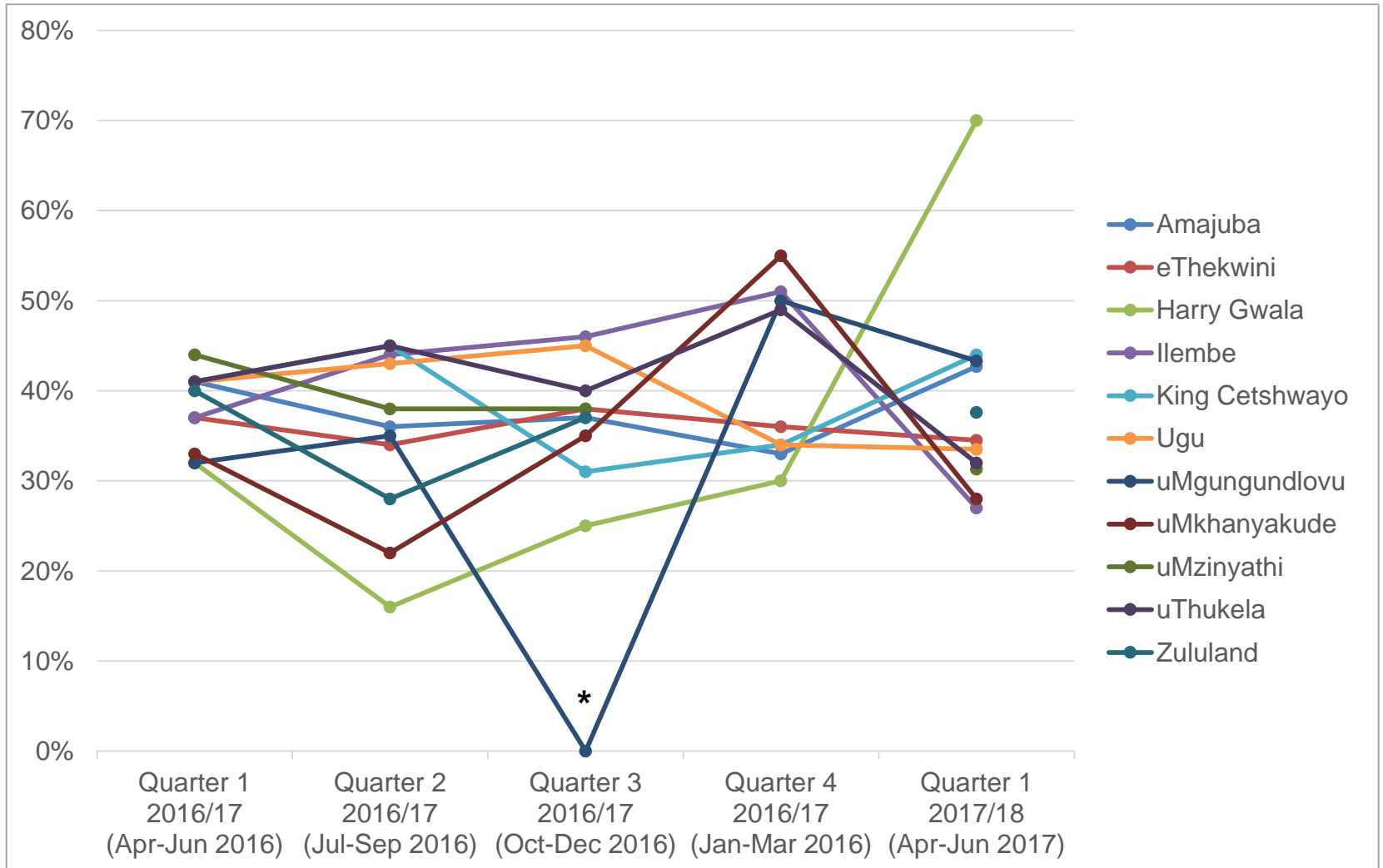
Dashboard & Summary: New Sexual Assault Cases

- Eight Districts (i.e., Amajuba, eThekwini, Ilembe, Ugu, uMgungundlovu, uMkhanyakude, uMzinyathi, uThukela and Zululand districts) showed a decreasing trend in sexual assault cases in Q1 FY 2017/18
- uMgungundlovu District reported the largest decrease in sexual assault cases between Q4 FY 2016/17 and Q1 FY 2017/18. It is also the only district that showed a consistent decrease in sexual assault cases over the quarters as of Q2 FY 2016/17.

Dashboard & Summary: Children under 12 Sexual Assault

- More than a third (39%) of sexual assault cases in the province comprise of cases involving children under the age of 12 years who have been sexually assaulted
- Overall, sexual assault cases involving children under the age of 12 years shows an inconsistent trend, the number of reported cases shows a slight decrease in Q2 FY 2016/17, reported cases then increase in Q3 and Q4 FY 2017/18 and slightly decrease by 2% in Q1 FY 2017/18
- Six Districts show a decrease in the percentage of children under 12 years sexually assaulted out of the total sexual assault cases in the quarter. These were eThekweni, Ilembe, uMgungundlovu, uMkanyakude, uMzinyathi and uThukela Districts. The largest percentage decrease in sexual assault cases involving children under 12 years between Q4 FY 2016/17 and Q1 FY 2017/18 were uMkhanyakude and Ilembe Districts

Graph 7: Children under 12 sexually assaulted (%)



* Data Quality: Gaps in data

Dashboard & Summary: Children under 12 Sexual Assault

- More than a third (39%) of sexual assault cases in the province comprise of cases involving children under the age of 12 years who have been sexually assaulted
 - Overall, sexual assault cases involving children under the age of 12 years showed an inconsistent trend
 - Increases in cases were observed in 5 Districts; Amajuba, Harry Gwala, King Cetshwayo, Ugu and Zululand Districts. The largest percentage increase in reported cases was observed in Harry Gwala District
 - Harry Gwala further showed a consistent increasing trend in reported sexual assault cases involving children under 12 years over the quarters, reaching a high percentage of 70% in Q1 FY 2017/18.
- Six Districts, namely; eThekweni, iLembe, uMgungundlovu, uMkhanyakude, uMzinyathi and uThukela showed a decrease sexual assault cases involving children in the quarter
 - The largest percentage decrease between Q4 FY 2016/17 and Q1 FY 2017/18 was recorded in uMkhanyakude and iLembe Districts

Table 8: Total number of clients on ART Quarter 1 2017/18

District	Target	Quarter 1 2017/18	% Achievement	Deviation
Amajuba	56780	54196	95%	2584
eThekwini	430318	383869	89%	46449
Harry Gwala	57181	49047	86%	8134
Ilembe	71977	65636	91%	6341
King Cetshwayo	112857	107748	95%	5109
Ugu	88758	87595	99%	1163
uMgungundlovu	139253	134093	96%	5160
uMkhanyakude	79184	86166	109%	
uMzinyathi	60803	55596	91%	5207
uThukela	75284	71823	95%	3461
Zululand	101328	92170	91%	9158
Province	1 273 723	1 187 939	93%	85 784

Dashboard & Summary: Clients on ART

- A total of 1 187 939 clients were on ART in Q1 FY 2017/18 in the province; showing an achievement of 93% of the target for the quarter
- uMkhanyakude District achieved its target of clients on ART for Q1 FY 2017/18
- Eight Districts (Amajuba, Ilembe, King Cetshwayo, Ugu, uMgungundlovu, uMzinyathi, uThukela and Zululand) achieved over 90% of the targeted clients on ART in the quarter.

Table 9: Maternal Deaths in Public Health Facilities Quarter 1 2017/18

District	Q4 FY 2016/17	Q1 FY 2017/18	Difference
Amajuba	3	3	0
eThekwini	19	23	4
Harry Gwala	0	3	3
Ilembe	2	1	-1
King Cetshwayo	7	8	1
Ugu	3	1	-2
uMgungundlovu	3	*	
uMkhanyakude	2	1	-1
uMzinyathi	*	1	
uThukela	1	3	2
Zululand	1	6	5
Province	41	50	9

* Data Quality: Gaps in data

Dashboard & Summary: Maternal Deaths

- | | |
|---|--|
| <ul style="list-style-type: none">Overall 50 maternal deaths were recorded in the province in Q1 FY 2017/18; this increased from Q4 FY 2016/17In terms of absolute numbers eThekweni had the highest number (23) of maternal deaths in the quarter. However, Zululand District was noted to have the largest increase in maternal deaths in Q1 FY 2017/1 | |
| <ul style="list-style-type: none">Slight decreases in the number of maternal deaths were observed in Ugu, Ilembe and uMkhanyakude Districts in the quarter compared to Q4 FY 2016/17 | |

Table 10: Infant Deaths in Public Health Facilities Quarter 1 2017/18

District	Q4 FY 2016/17	Q1 FY 2017/18	Difference
Amajuba	35	21	-14
eThekwini	192	189	-3
Harry Gwala	34	35	1
Ilembe	40	48	8
King Cetshwayo	90	78	-12
Ugu	46	50	4
uMgungundlovu	43	61	18
uMkhanyakude	29	50	21
uMzinyathi	*	8	
uThukela	43	48	5
Zululand	95	44	-51
Province	647	632	-15

* Data Quality: Gaps in data

Dashboard & Summary: Infant Deaths

- | | |
|--|--|
| <ul style="list-style-type: none">▪ Despite having decreased from Q4 FY 2016/17, an overall 632 infant deaths were recorded in the province in the quarter▪ Districts recording the largest increase in infant deaths during the quarter compared to Q4 FY 2017/18 were uMkhanyakude and uMgungundlovu Districts. Infants deaths in uMkhanyakude District increased by 21 in the quarter. | |
| <ul style="list-style-type: none">▪ A significant decrease of 51 infant deaths was noted in Zululand District in the quarter. This was followed by Amajuba (14) and King Cetshwayo Districts (12). | |

Table 11: LACs submitting reports Quarter 1 FY 2018/19

District	# of LMs	Quarter 1 2017/18 (Apr-Jun 2017)	% Submitted
Amajuba	3	*	
Harry Gwala	4	3	75%
Ilembe	4	2	50%
King Cetshwayo	5	4	80%
Ugu	4	3	75%
uMgungundlovu	7	5	71%
uMkhanyakude	4	4	100%
uMzinyathi	4	3	75%
uThukela	3	1	33%
Zululand	5	1	20%
Province	43	22	51%

* Data Quality: Gaps in data

Table 12: WACs submitting reports Quarter 1 FY 2018/19

District	# of Wards	Quarter 1 2017/18 (Apr-Jun 2017)	% Submitted
Amajuba	54	*	
eThekwini	110	*	
Harry Gwala	61	60	98%
Ilembe	76	2	3%
King Cetshwayo	103	*	
Ugu	76	66	87%
uMgungundlovu	84	37	44%
uMkhanyakude	71	0	0%
uMzinyathi	56	20	38%
uThukela	74	35	47%
Zululand	90	0	0%
Province	855	220	26%

* Data Quality: Gaps in data

Dashboard & Summary: LAC & WAC report submission

- | | |
|---|--|
| ▪ Although LAC report submission shows an improvement in the quarter, overall report submission remains low with only 51% of LACs submitting reports to the DAC | |
| ▪ WAC report submission remains a challenge in the province; an overall 26% of WAC reports were submitted in the quarter | |

Thank You